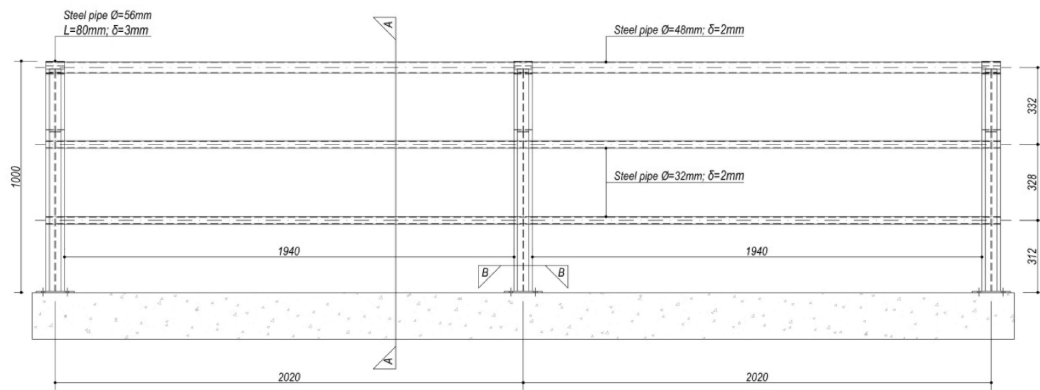
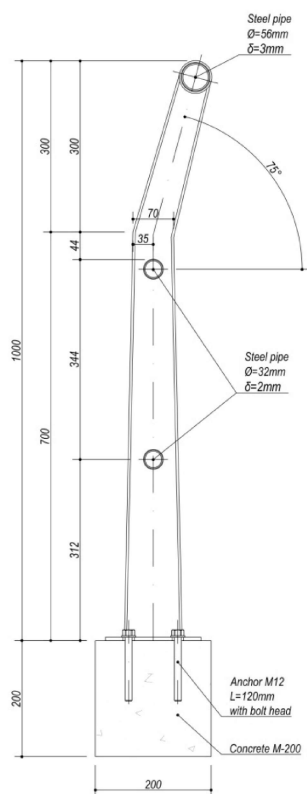


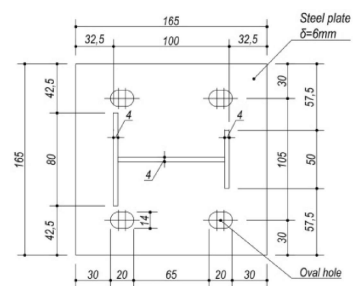
## Handrail Model 1



### Section A-A



### Section B-B



Performance class
Steel post with height 1000mm
Steel plate δ6mm fixed with M12x120 anchor
Steel pipe Ø32x2mm
Steel pipe Ø48x2mm
Cork for pipe Ø32 & Ø48

Hot-dip galvanized according to International Standard EN ISO 1461.



CE Certificate of Notified European Body.